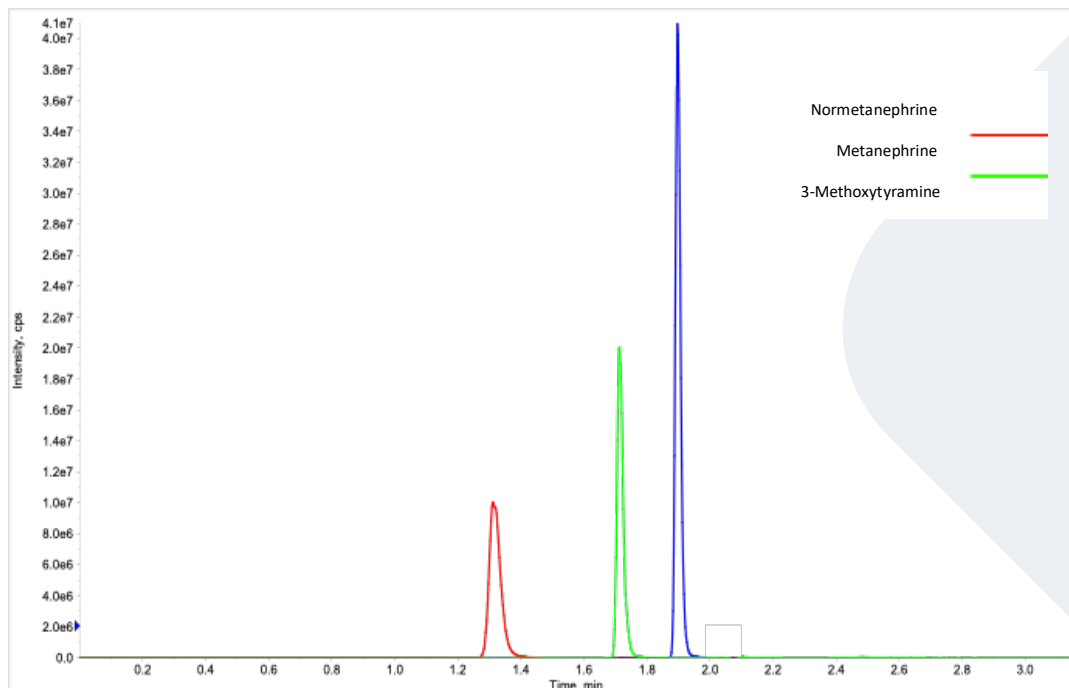


FLOMASS[®] TOTAL METANEPHRINES IN URINE

Metanephrines (Metanephrine, Normetanephrine and 3-Methoxytyramine) are molecules obtained by Catecholamines metabolism (Epinephrine, Norepinephrine and Dopamine) and their amount is linked to pheochromocytoma or others neuroendocrine tumors.



HPLC-MS/MS system conditions

Ionization: ESI positive mode

MS/MS: specific MRM

Injection volume: 1 μ L (variable according to instrumental sensitivity)

Running time: 3.2 min

Column heater: 45°C

Column conditioning: column should be conditioned for 5 min at chromatographic gradient initial condition. Then, run 3 blank injections (MPA only) using the gradient as reported in IFU.

Sample preparation

- Pipette 200 μ L of urine (if human, preserved with 0.1% HCl) in a hydrolysis tube with cap. Then add 10 μ L of Hydrolyzing Reagent and incubate at 90°C for 25 min
- Prepare a mix with μ L of Complexing Reagent + 20 μ L Internal Standard Mix sufficient for the number of samples to be analyzed
- After cooling, add 620 μ L of the Mix solution obtained in the previous step of the procedure to each vial
- Add 200 μ L of pH Correction Reagent
- Vortex for 30 sec
- Condition the SPE Column with 1 mL of SPE Activator Reagent followed by 1 mL of SPE Conditioner Reagent
- Load the sample onto the SPE column and allow it to elute without applying vacuum
- Add 1 mL of SPE Wash Reagent and apply full vacuum at max for 30 sec dehydrating the SPE column
- Elute the analytes with 600 μ L of SPE Eluent Reagent, if necessary, apply vacuum
- Transfer 200 μ L of eluate to an autosampler vial
- Inject 1-20 μ L accordingly to instrumental sensitivity and analyze with HPLC-MS/MS technique

Performance

ANALYTE	LINEARITY (ng/mL)	LLOD (ng/mL)	LLOQ (ng/mL)	CV% INTRA	CV% INTER
Metanephrine	0.6 – 8000	0.2	0.6	2.0 – 2.6	3.2 – 3.4
Normetanephrine	1.5 – 16000	0.4	1.5	2.0 – 3.2	2.9 – 4.1
3-Methoxytyramine	1.1 – 8000	0.3	1.1	1.5 – 1.8	3.0 – 3.6

Ordering guide

EUM18100	FloMass® Total Metanephrine in Urine	100 assays
EUM18041	7-Levels Calibrators, lyophil.	2 x 7 x 1.0 mL
EUM18051	2-Levels Controls, lyophil.	2 x 2 x 2.0 mL
EUM00C17	Chromatographic Column	1 pc
EUM00A14	Precolumn	4 pcs

CHR-03-20-REV.0