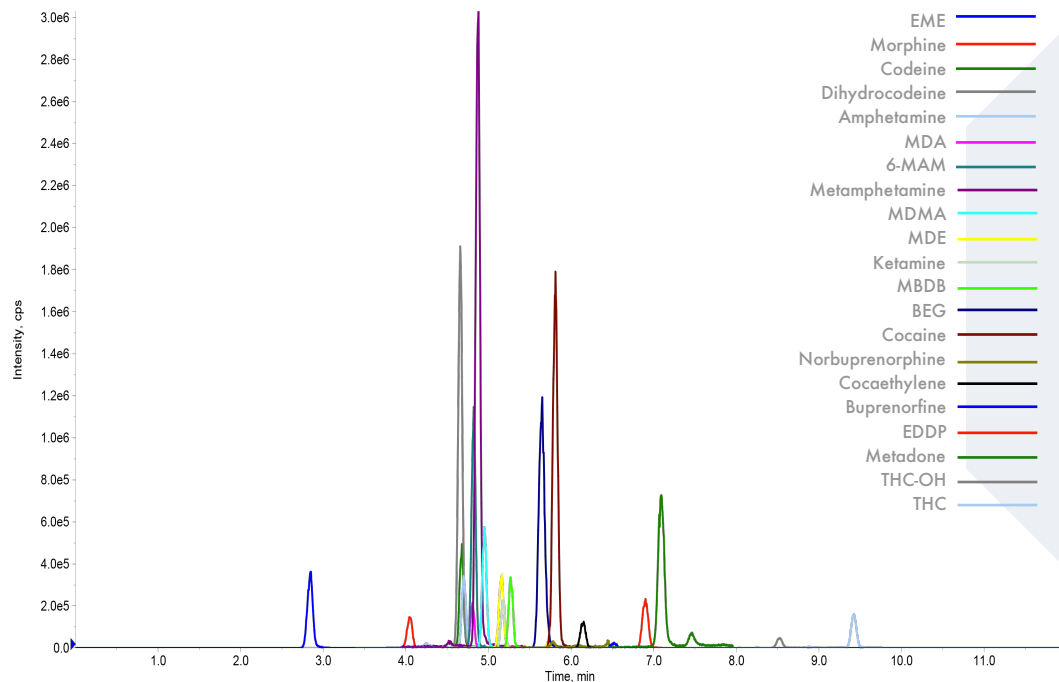


FLOMASS[®] DRUGS OF ABUSE IN HAIRS

Our panel of drug of abuse in hairs includes Amphetamine, Methamphetamine, MDA, MDE, MDMA, MBDB, Cocaine, Benzoylcegonine, Ecgoninmethylester, Coca ethylene, Morphine, Codeine, Dihydrocodeine, 6-MAM, THC, 11-OH-THC, Methadone, EDDP, Buprenorphine, Norbuprenorphine, Ketamine.



HPLC-MS/MS system conditions

Ionization: ESI positive mode

MS/MS: specific MRM

Injection volume: 15 μ L (variable according to instrumental sensitivity)

Running time: 12 min

Column heater: 40°C

Sample preparation

- Use a sample strand of at least 50 mg, segmenting them as little as possible, into a 7 mL mill tube
- Add 4 mL of Wash solution, vortex for 1 min, remove supernatant
- Add 4 mL of Reconstituting Solution, vortex for 1 min, remove supernatant
- Remove the solvent residue by leaving the open tube in the dry bath at 45°C for 10 min
- Add 20 steel balls in each tube and grind the entire quantity using mill (see conditions on -IFU)
- After removing steel balls, weigh exactly about 20 mg in vials
- Add 400 µL of Extraction Solution and vortex for 30 sec
- Incubate over night at 60°C
- Add 40 µL of Internal Standard mix and vortex for 30 sec
- Place in ultrasonic bath at no more than 60°C for 2.5 h
- After centrifuging at 12000 rpm for 5 min, add 20 µL of supernatant in a different tube and 180 µL of Extracting Solution
- Inject 10-20 µL according to instrumental sensitivity and analyze with HPLC-MS/MS technique

Performance

ANALYTE	LINEARITY (pg/mg)	LLOD (pg/mg)	LLOQ (pg/mg)	ANALYTE	LINEARITY (pg/mg)	LLOD (pg/mg)	LLOQ (pg/mg)
Amphetamine	5.21 - 10000	1.26	5.21	Codeine	0.794 - 20000	0.238	0.794
Methamphetamine	1.75 - 10000	0.525	1.75	Dihydrocodeine	0.750 - 20000	0.225	0.750
MDA	2.02 - 10000	0.605	2.02	6-MAM	1.40 - 20000	0.420	1.40
MDE	3.35 - 10000	1.01	3.35	THC	0.581 - 2500	0.174	0.581
MDMA	0.621 - 10000	0.186	0.621	THC-OH	1.57 - 2500	0.473	1.57
MBDB	0.646 - 10000	0.194	0.646	Methadone	3.20 - 10000	0.961	3.20
Cocaine	0.604 - 25000	0.181	0.604	EDDP	0.218 - 2500	0.065	0.218
BEG	0.161 - 2500	0.048	0.161	Bruprenorphine	0.419 - 1000	0.126	0.419
EME	0.094 - 2500	0.028	0.094	Norbuprenorphine	1.51 - 1000	0.454	1.51
Cocaethylene	0.228 - 2500	0.068	0.228	Ketamine	1.96 - 10000	0.588	1.96
Morphine	0.682 - 20000	0.204	0.682				

Ordering guide

EUM20100	FloMass® Drugs of Abuse in Hairs	100 assays
EUM20041	6-Levels Calibrators, lyophil.	2 x 6 x 2.5 mL
EUM02051	2-Levels Controls, lyophil	2 x 2 x 2.5 mL
EUM00C02	Chromatographic Column	1 pc
EUM00A04	Precolumn	4 pcs

CHR-06-22-REV.0