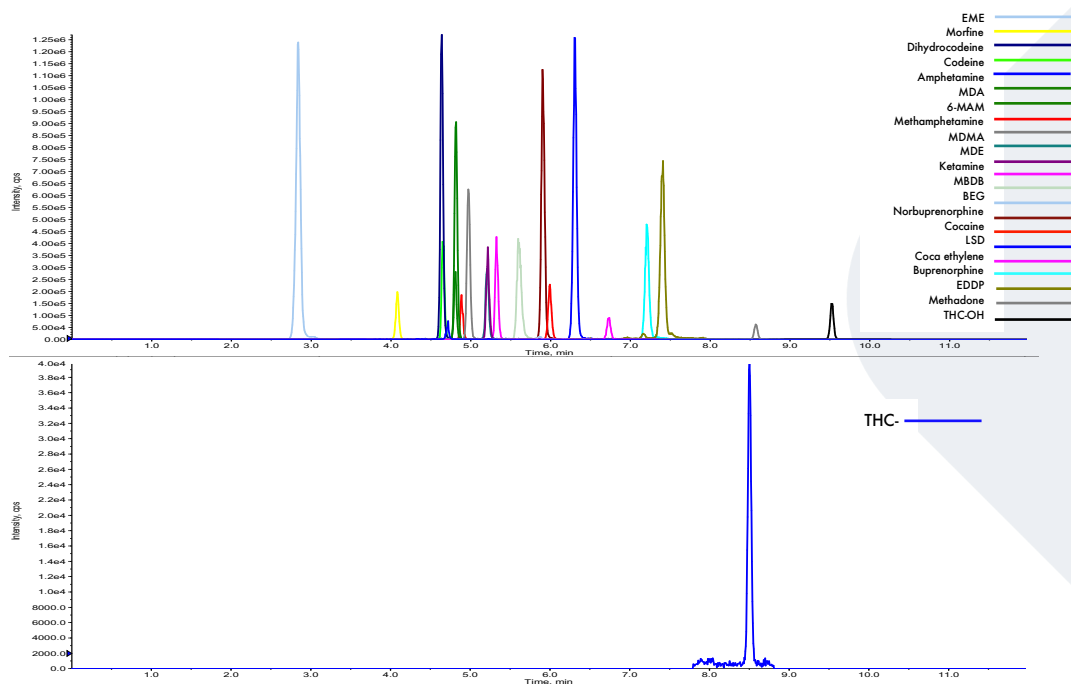


## FLOMASS<sup>®</sup> DRUGS OF ABUSE IN WHOLE BLOOD

Our panel of drug of abuse in whole blood includes Amphetamine, Methamphetamine, MDA, MDE, MDMA, MBDB, Benzoyllecgonine, Cocaine, Coca ethylene, Morphine, Codeine, Dihydrocodeine, 6-MAM, THC, 11-OH-THC, THC-COOH, Methadone, EDDP, Buprenorphine, Norbuprenorphine, Ketamine, LSD.



### HPLC-MS/MS system conditions

**Ionization:** ESI positive mode, except THC-COOH analyzed in negative mode

**MS/MS:** specific MRM

**Injection volume:** 15  $\mu$ L (variable according to instrumental sensitivity)

**Running time:** 12 min

**Column heater:** 31°C

**Column conditioning:** column should be conditioned for 5 min at the chromatographic gradient initial condition. Then run 3 blank injections (MPA only) using the gradient as indicated on IFU

## Sample preparation

- Prepare a mix composed of 100  $\mu$ L of Buffer Solution + 20  $\mu$ L of Internal Standards Mix per sample
- Pipette in each vial 120  $\mu$ L of the mix prepared in the previous step of the procedure
- Add to each vial 100  $\mu$ L of whole blood and rinse out the tip several times
- Vortex and incubate for 5 min at room temperature
- Add gently 600  $\mu$ L Precipitant Solution
- Vortex for 30 sec
- Centrifuge at 12000 rpm for 12 min
- Transfer the supernatant into another vial and dilute it with Diluent Solution with a 1:2 ratio
- Transfer into an autosampler vial with plastic adapter and analyze with HPLC-MS/MS technique

## Performance

For detailed performance, please refer to IFU

## Ordering guide

EUM08100	FloMass® Drugs of Abuse in Whole Blood	100 assays
EUM08042	6-Levels Calibrators, lyophil.	3 x 6 x 0.6 mL
EUM08055	2-Levels Controls, lyophil.	3 x 2 x 0.6 mL
EUM00C02	Chromatographic Column	1 pc
EUM00A04	Precolumn	4 pcs

CHR-07-19-REV.4