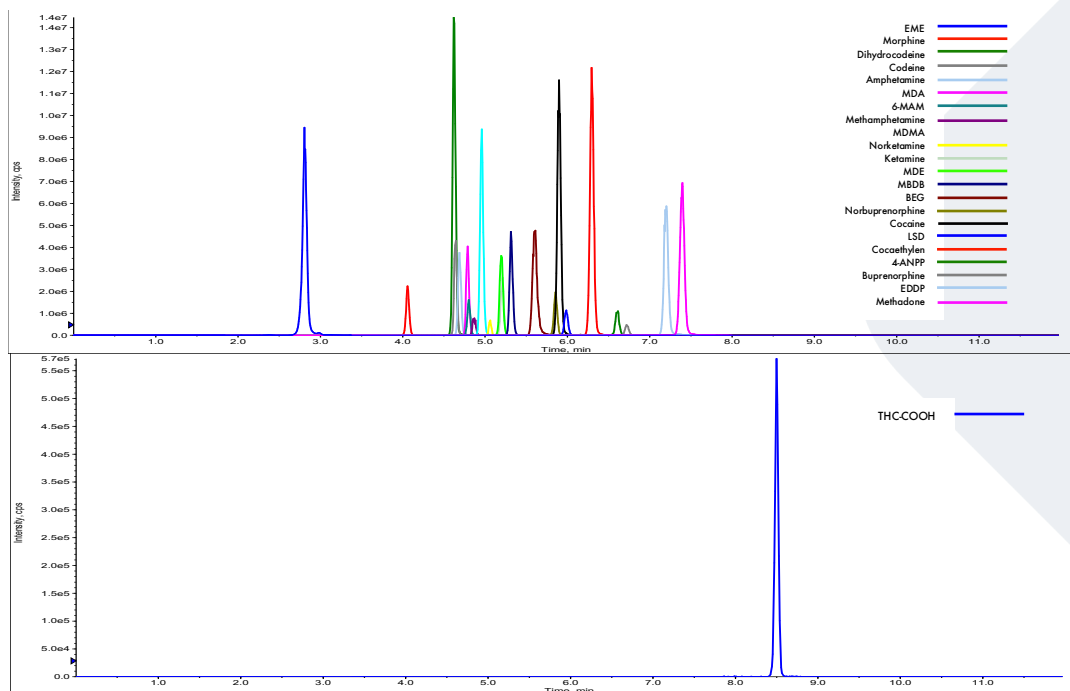


## FLOMASS<sup>®</sup> DRUGS OF ABUSE IN URINE

Our panel of drug of abuse in urine includes Amphetamine, Methamphetamine, MDA, MDE, MDMA, MBDB, Cocaine, Benzoylcegonine, Ecgoninmethylester, Coca ethylene, Morphine, Morphine 3-Glucuronate, Codeine, Dihydrocodeine, 6-MAM, THC-COOH, Methadone, EDDP, Buprenorphine, Norbuprenorphine, Ketamine, Norketamine, 4-ANPP, LSD.



### HPLC-MS/MS system conditions

**Ionization:** ESI positive mode, except THC-COOH analyzed in negative mode

**MS/MS:** specific MRM

**Injection volume:** 15  $\mu$ L (variable according to instrumental sensitivity)

**Running time:** 12 min

**Column heater:** 40°C

## Sample preparation

- Prepare a mix composed of 50 µL of Buffer Sol+ 10 µL of Internal Standard Mix per sample
- Pipette 250 µL of urine. Add 60 µL of the mix prepared at previous step of the procedure and 15 µL of Buffer Sol (or Hydrolysis Solution if you use enzymatic hydrolysis protocol)
- Vortex for 10 sec  
Incubate in thermoblock at 65°C for 4 hours (ONLY if you use hydrolysis protocol)
- Add 300 µL of Precipitant Sol, vortex for 10 sec and centrifuge at 12000 rpm for 5 min
- Transfer the supernatant into another plastic vial and dilute it with Diluent sol with 1:2 ratio  
Transfer into an autosampler vial and analyze with HPLC-MS/MS technique

## Performance

For detailed performance, please refer to IFU.

## Ordering guide

EUM02100	FloMass® Drugs of Abuse in Urine	100 assays
EUM2042	6-Levels Calibrators, lyophil.	3 x 6 x 0.6 mL
EUM02055	2-Levels Controls, lyophil	3 x 2 x 0.6 mL
EUM00C02	Chromatographic Column	1 pc
EUM00A04	Precolumn	4 pcs

CHR-11-19-REV.4